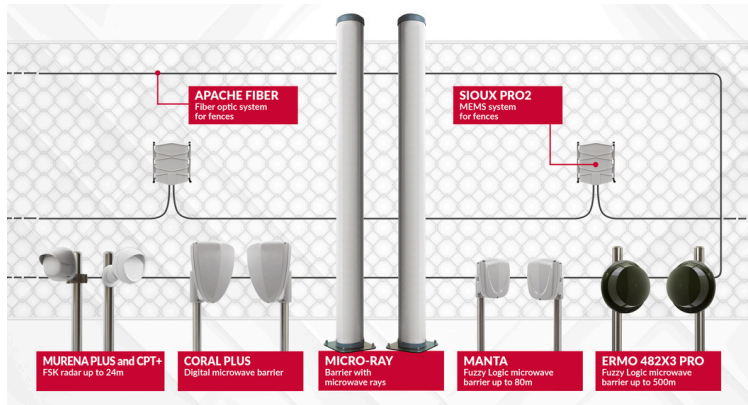
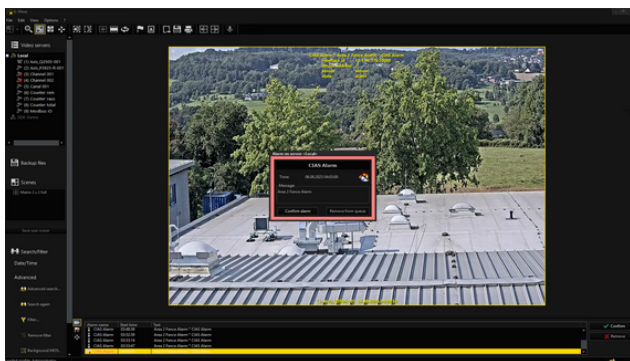


INTEGRATION GEUTEBRÜCK



The main challenge for security systems, in government, military, and commercial settings, is to ensure reliable performance even in adverse weather conditions, such as sudden changes in light, rain, fog, high humidity, and temperature changes. The goal is to achieve a high probability of detection while keeping false alarms to a minimum.

This led to the need to create **integrations** between **CIAS** products and **Geutebrück's** video surveillance systems that could optimize the level of security provided.



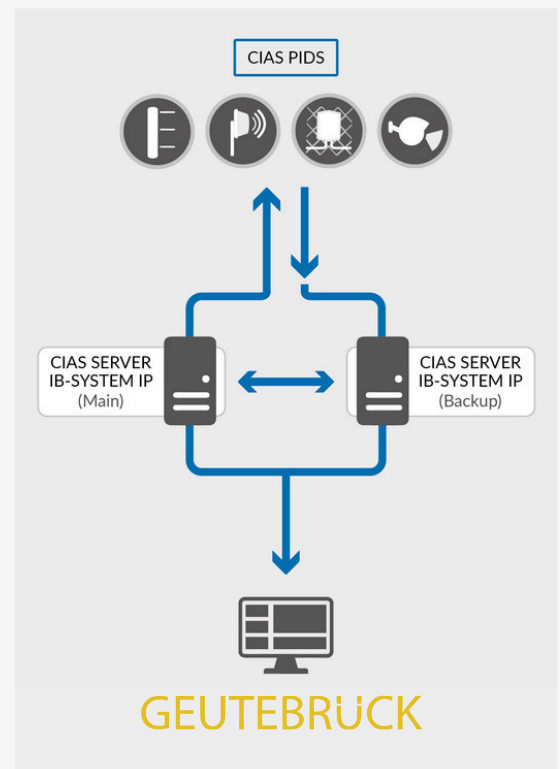
WHO IS GEUTEBRÜCK?

Geutebrück GmbH is a German company specializing in providing advanced video surveillance solutions for lasecurity. It designs and implements scalable video management systems, intelligent video analytics, perimeter protection solutions, access control and operational flow tracking. Its technologies are used in government, industrial, logistics, infrastructure and commercial environments, offering reliable performance even in critical or high-security environments. Geutebrück systems ensure compliance with European data protection standards (GDPR), integration with third-party devices, and high customization.

See geutebrueck.com for more information.

FEATURES

Integration of the CIAS02 protocol is done through the collection and polling system IB-System IP, which, by dialoguing with the external field where the sensors are located, is able to transfer all pre-alarm, alarm, fault, tamper, and non-response states into the Geutebrück platform.



COMPATIBILITY

CIAS

Ermo 482X3pro
Micro-Ray
Manta
Coral Plus

Pythagoras
Murena Compact+
Sioux MemsPro2
Apache Fiber

GEUTEBRÜCK

G-connect

HOW DOES INTEGRATION WORK?

When an intrusion attempt is detected by CIAS sensors deployed on the perimeter to be protected, an information mechanism is immediately activated. Specifically, IB-System IP will collect all information from the field, processing the message and communicating it to Geutebrück's G-connect platform located in the control center. The received signal, based on presets or previously programmed intervention logic, will direct the view of one or more cameras at the event location in order to video-confirm the presence of the intruder and trigger a video recording.

This integration makes it possible to speed up the interpretation and classification of the alarm event and achieve effective site protection even in adverse weather conditions.

WHAT IS IB-SYSTEM IP?

IB-System IP is CIAS's software system of event collection from field sensors. Collection is via Ethernet connection on CIAS02 protocol or via RS485 network and CIAS IP converter. The system can handle up to 1280 sensors with a latency time never exceeding 500mSec. The application handles a number of Cyber Security layers essential in perimeter protections of critical infrastructure such as: AES128 encrypted communication, MAC Signature and IEEE 802.1X Security.

IB-System IP allows connection to G-connect, through the "GEUTEBRÜCK" plugin specially prepared by CIAS.

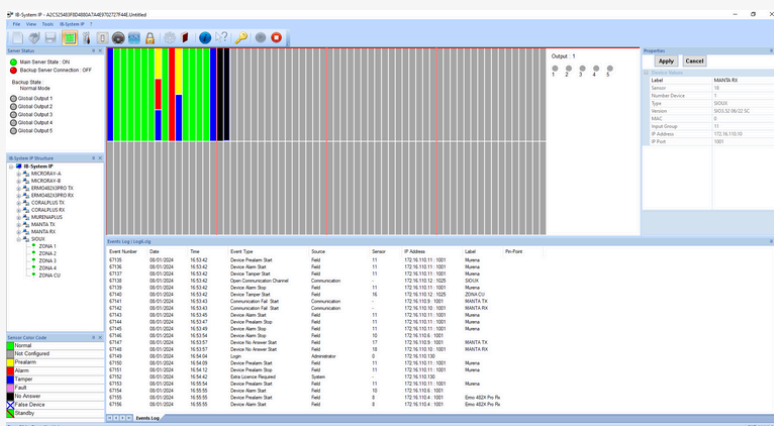
This protocol is designed to manage from a single output all the sensors in the complete system.



CONFIGURATION

In IB-SYSTEM IP the plug-in is activated automatically through the license in the hardware key upon purchase of the specific PLUGIN-Geutebrück license. In Geutebrück the plug-in is activated by a dedicated license called Geutebrück G-connect.

If the plug-in is present, IB-SYSTEM IP shows the "Geutebrück" page in the OPTIONS panel. Having completed all the fields and configured the G-connect system generated by IB-SYSTEM IP, you can then configure the management of ALARMS in G-connect so that each event generated is matched with an ALARM and creating ACTIONS referring to the CUSTOMER EVENTS created above.



HOT BACK-UP SYSTEM

If the main server goes down, the presence of the backup server ensures the continuity of alarm management.