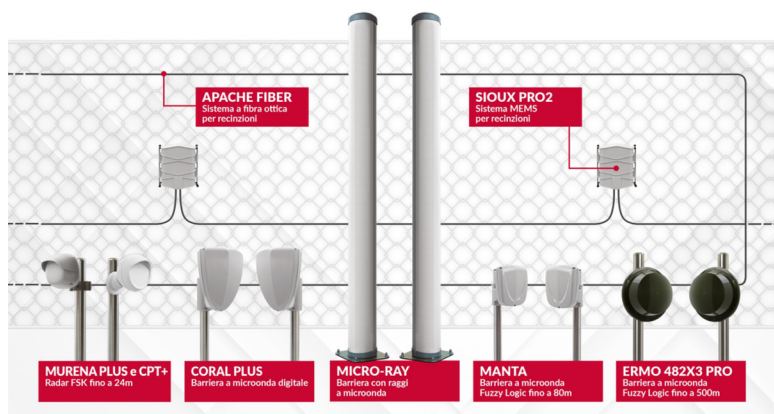


# INTEGRATION *HIKVISION*<sup>®</sup>



Extreme weather conditions such as fog, rain, humidity, temperature variations and sudden light changes pose the biggest challenges to video surveillance systems. Regardless of the presence of video analytics, Day/ Night or thermal, is to ensure the surveillance system achieves the highest probability of detection with the lowest number of false alarms possible.

The integration partnership between the CIAS and HIKVISION platforms optimize the level of security provided to meet these challenges.

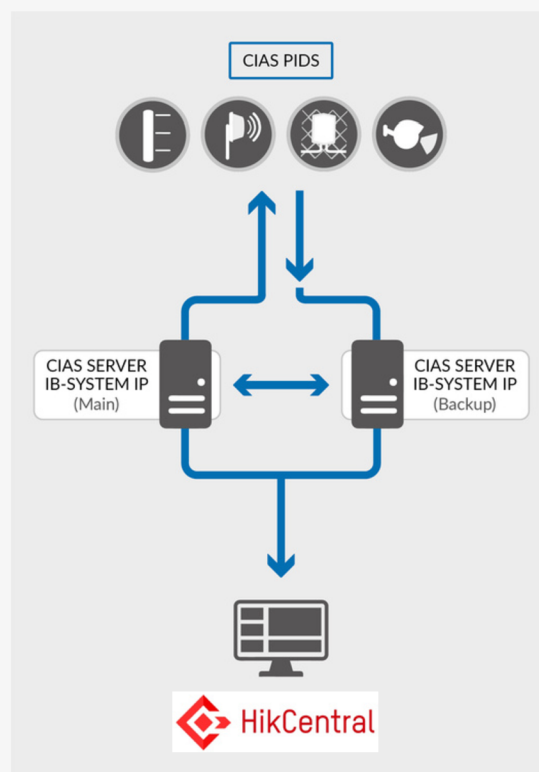


## WHO IS HIKVISION?

Hikvision is a globally renowned provider of security products and solutions. Established in 2001, Hikvision has grown from a small company into a leading enterprise in the security industry, offering a wide range of advanced surveillance systems, including video surveillance technology, equipment, and services. Their offerings include IP cameras, and digital video recorders. Hikvision is dedicated to developing innovative technologies and ensuring high-quality and cost-effective solutions for its customers across various sectors.

## CHARACTERISTICS

The integration of the CIAS protocol takes place through the IB-System IP collection and polling system which, by communicating with the external field where the sensors are present, is able to transfer all pre-alarm, alarm, fault, tampering and non-response states in the Genetec platform.



## COMPATIBILITY

### CIAS

Ermo 482X3pro	Pythagoras
Micro-Ray	Murena Compact+
Manta	Sioux MemsPro2
Coral Plus	Apache Fiber
	Blackfeet cable Plus

### HIKVISION

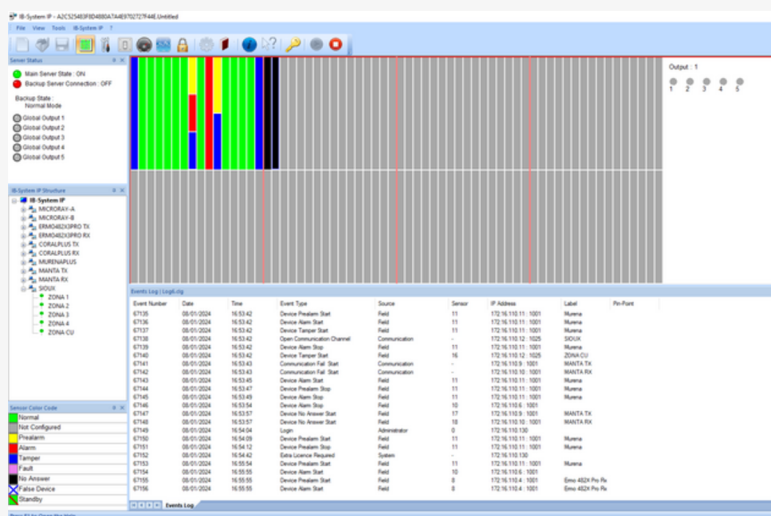
HikCentral Professional V2.2.1  
 IVMS5200

## HOW INTEGRATION WORKS?

When an intrusion attempt is detected by the CIAS sensors located on the perimeter to be protected, a response and interaction mechanism is immediately activated. Specifically, IB-System IP will collect all the information coming from the field, certifying the alarms and communicating them to the HikVision platform located in the control center. The alarms received, based on the presets or previously programmed intervention logics, will direct the vision of one or more cameras at the location of the event in order to video confirm the presence of the intruder and start a video recording. This integration makes it possible to speed up the interpretation and classification of the alarm event and obtain effective site protection even in the event of adverse weather conditions.

## WHAT IS IB-SYSTEM IP?

IB-System IP is the CIAS software system for the acquisition of all alarm states. The collection takes place via Ethernet connection on TCP/IP protocol or via RS485 network and Cias IP converter. The system is able to manage up to 1280 sensors with a latency time never exceeding 500mSec. The application manages a series of Cyber Security levels essential in the perimeter protection of critical infrastructures such as: AES128 encrypted communication, MAC signature and IEEE 802.1X security. IB-System IP allows you to set an output protocol for each of the 50 configurable outputs. IB-SYSTEM IP is compatible with HikCentral Professional.



## CONFIGURATION

Once the IB-System IP application has been started, you need to choose the CIAS02 protocol. To complete the configuration, you must enter the IP address of the server on which HikVISION HikCentral software runs.



# HikCentral Professional



## HOT BACK-UP OF SYSTEM

In the event of a failure of the main server, the presence of the backup server guarantees continuity in alarm management