

3D MEMS FENCE SENSOR SYSTEM

# SIoux MEMS PRO2

1400 m

NEW



80  
ZONES



FUZZY LOGIC  
INSIDE



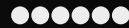
REDUNDANCY



IP-READY PoE



PIN POINT  
LOCATION 1M



6 YEAR WARRANTY

100%  
screwless

NEW RIGID AND MESH FENCE INTRUSION DETECTION SYSTEM



EXTREME SECURITY

SINCE 1974

V 1.1



# SIoux MEMS PRO2

1400 m

**SIoux PRO2** is the brand-new version of CIAS' fence-mounted intrusion detection system for perimeter protection which since 2012 has been installed with great results on many sites, always with high-security requirements and specifications. The Sioux system has also been awarded numerous prestigious prizes. The system, which detects fence cutting, climbing and displacement, comprises up to 140 MEMS sensors, sensitive on all three spatial axes, for each of two branches monitored by the central controller. These sensors are clustered in groups of 7, with each cluster made by 1 master-sensor and 6 slave-sensors. Each Master sensor receives by its Slave sensors the electrical signal relevant to the detected vibration on the fence, digitalizes and transmits it to the Controller Unit. Via Sioux-Test Pro, or via Relays with the innovative Touch&Zone function, the 280 MEMS sensors in the array can be divided into up to 80 alarm zones.

## HIGHLIGHTS **NEW**



For any fence type

Double gasket

Fixing with ties



No fixing screws

IP grade: IP66

Anti-removal inclinometric embedded tool

## SIoux-CONTROLLER PRO2

STAINLESS STEEL BOX FOR OUTDOOR



IP-PoE

USB

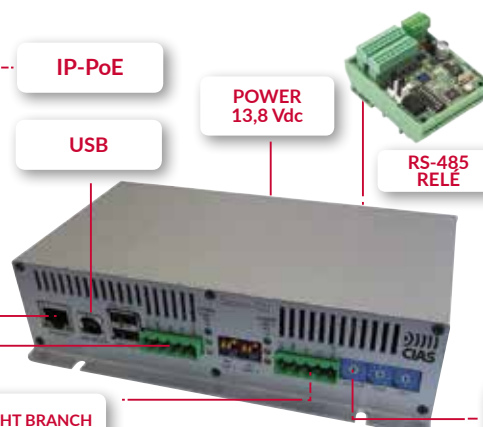
POWER  
13,8 Vdc

RS-485  
RELE

LEFT BRANCH

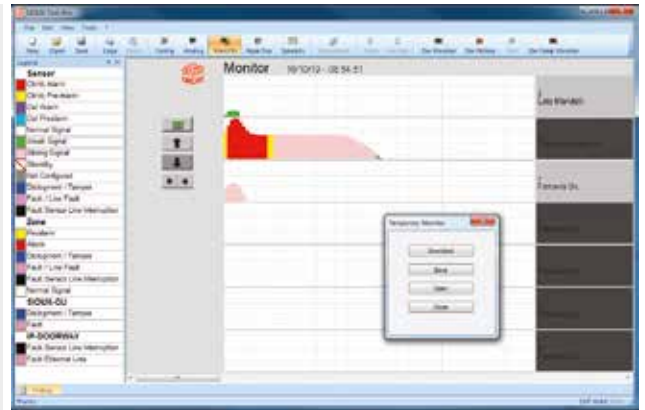
RIGHT BRANCH

PROGRAMMING  
SELECTORS

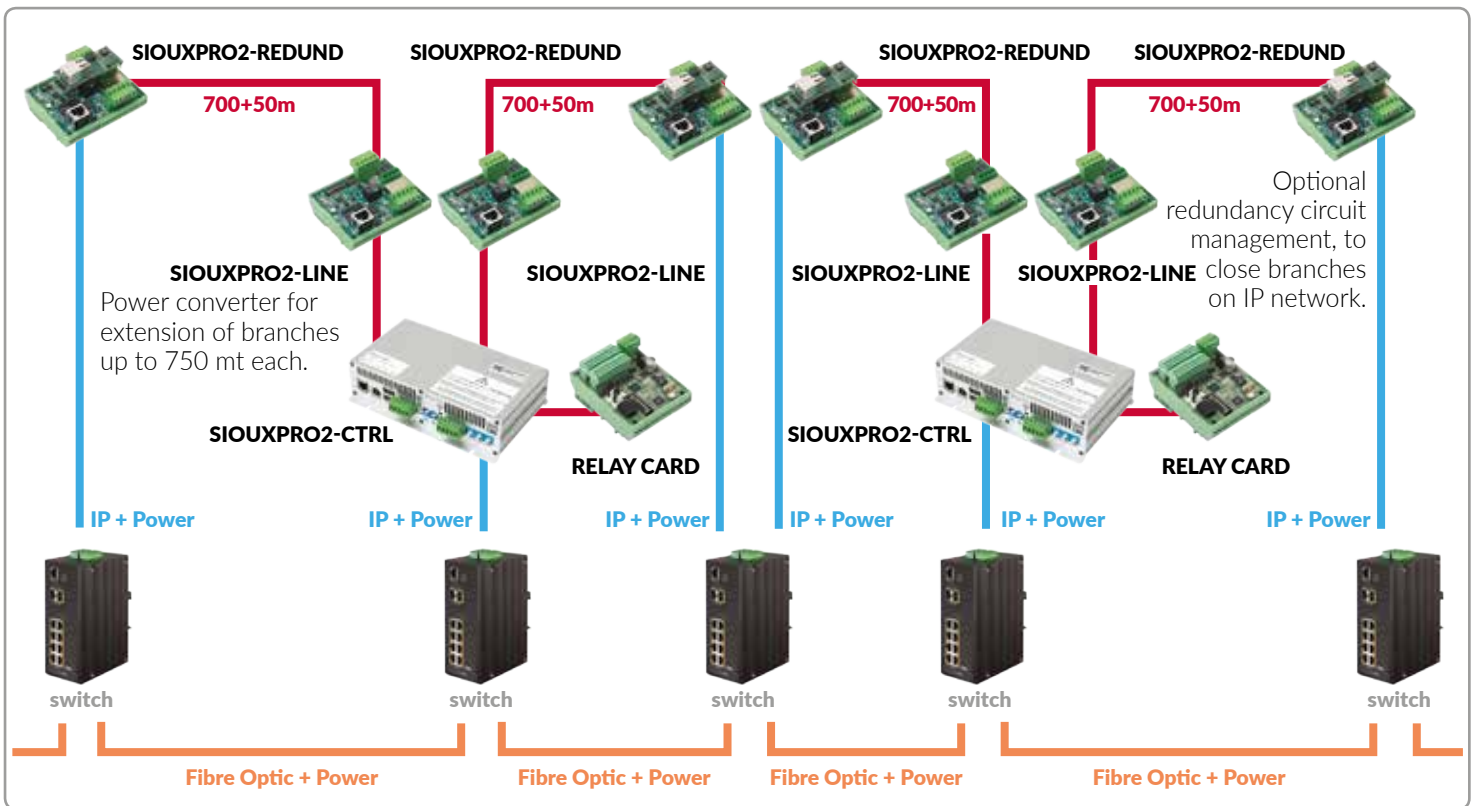


## REDUNDANCY AND LINE INSULATORS

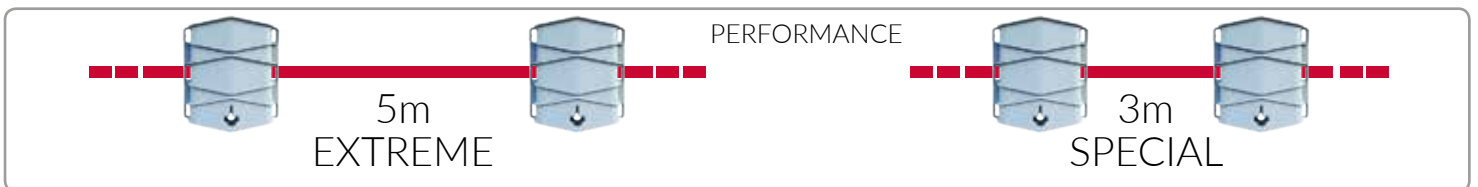
The new release of **SIoux PRO** introduces a very important feature: cable cut-immunity. This capability insures that each branch of the Sioux sensor array remains fully functional even if the connection cable between sensors is cut in one location. This feature is of utmost importance in very high-risk sites. It is implemented by putting a special module at the end of each of the 2 MEMS sensor branches to provide connectivity to the TCP/IP network. Moreover, up to 19 isolators can be added per each branch, to make it short-circuit proof in case of cutting of the communication cable.



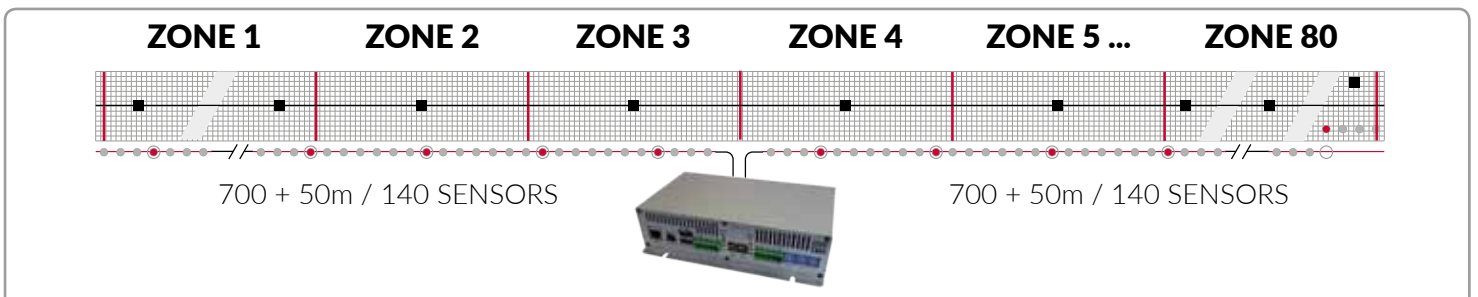
## REDUNDANCY CONFIGURATION



## SENSORS INTERAXLE SPACING



## SYSTEM DETAIL



## SPECIFICATIONS

SENSOR TYPE	MEMS ACCELEROMETER
DETECTION	CLIMBING, CUT AND FENCE DISPLACEMENT WITH ADJUSTABLE INCLINATION
COVERAGE	UP TO 1400 + 100m WITH A SINGLE CONTROL UNIT
POWER SUPPLY	13,8 Vdc OR PoE CLASS III (POWER OVER ETHERNET IEEE802.3af)
NUMBER OF ZONES	UP TO 80 ZONES PER PROCESSOR UNIT
ZONE LENGTH	EASILY DEFINABLE USING PC-BASED CONFIGURATION SOFTWARE OR SIMPLE <b>TOUCH &amp; ZONE™</b>
PROBABILITY OF DETECTION (POD)	98%
FALSE ALARM RATE	(FAR) : 8/1500m/YEAR
DETECTION HEIGHT	UP TO 6m
CONSUMPTION	10W AT 13,8Vdc – 10W WITH PoE
IP GRADE	IP66
TEMPERATURE	-40°C TO +70°C
FENCE TYPES	CHAIN-LINK, WELDED MESH, RIGID FENCE
CONFIGURATION AND CALIBRATION SOFTWARE	SIOUX-TEST PRO FOR LOCAL OR REMOTE MANAGEMENT
WARRANTY	6 YEARS
SPECIAL OUTPUTS	RS 485 AND ETHERNET FOR IB-SYSTEM IP
RELAYS OUTPUTS	UP TO 80 DRY RELAY CONTACTS ON RS-485 ALARM / TAMPER / FAILURE / PRE-ALARM / NO ANSWER
MTBF (MEAN TIME BEFORE FAILURE)	UP TO 150.000 HOURS
MTTR (MEAN TIME TO REPAIR)	5 MINUTES
MEMORY	EVENT LOGS UP TO 10 YEARS
SENSOR'S DIMENSION AND COLOR	117MM X 131MM X 50MM / RAL 7040
SDK AVAILABLE FOR FULL INTEGRATION WITH THIRD PARTY SYSTEMS (PROVIDED WITH PINPOINT OF ALARM WITH 1 METER RESOLUTION)	

### INTEGRATED WITH:



**milestone**  
The open platform company



CIAS RESERVES THE RIGHT TO CHANGE THE SPECIFICATIONS DESCRIBED IN THIS BROCHURE AT ANY TIME WITHOUT PRIOR NOTICE.

SINCE 1974



CIAS ELETTRONICA S.R.L.  
VIA DURANDO, 38 | 20158 MILANO | ITALY  
T +39 02 3767161  
WWW.CIAS.IT | INFO@CIAS.IT

