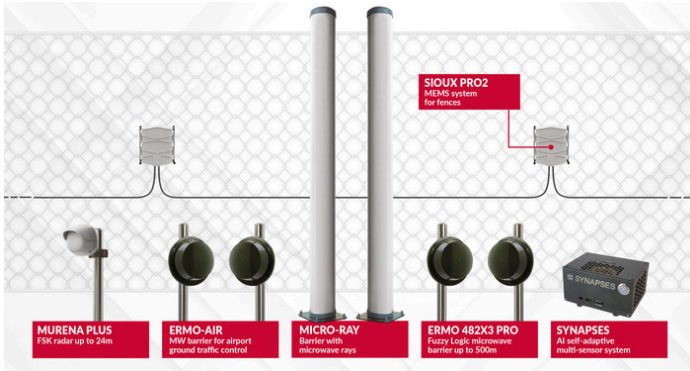
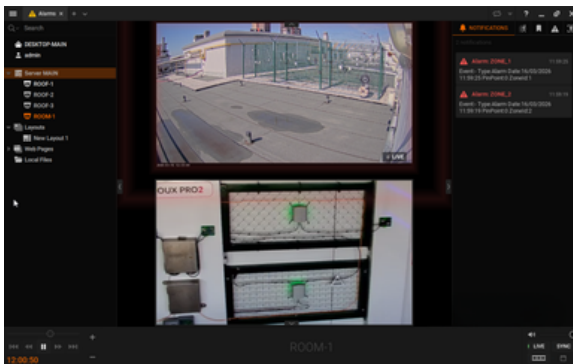


INTEGRATION Hanwha Vision



Extreme weather conditions such as fog, rain, humidity, temperature variations and sudden light changes pose the biggest challenges to video surveillance systems. Regardless of the presence of video analytics, Day/ Night or thermal, the goal is to ensure the surveillance system achieves the highest probability of detection with the lowest number of false alarms possible.

The integration partnership between the CIAS and Hanwha VIDEO platforms optimize the level of security provided to meet these challenges.



WHO IS HANWHA?

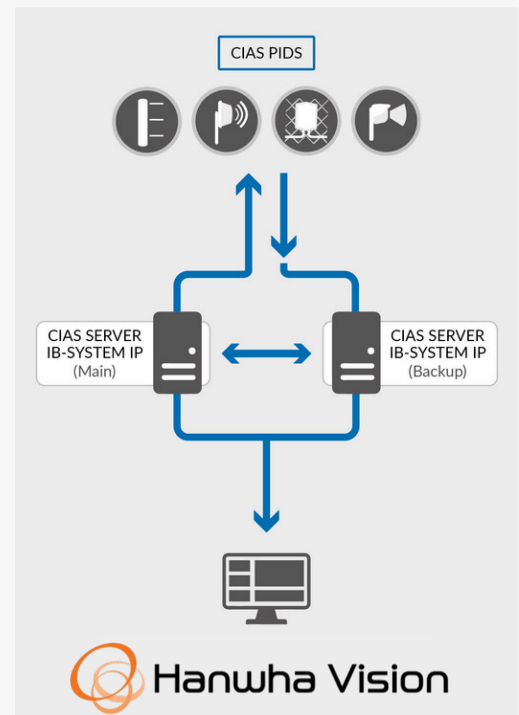
Hanwha Vision is part of the Hanwha Group, a South Korean multinational operating globally in the energy, aerospace, and advanced technology sectors, and specializing in the design and delivery of professional video surveillance and integrated security solutions.

The company develops video management systems, high-performance IP cameras, and AI-based intelligent video analytics for perimeter security and the protection of critical infrastructures. Hanwha solutions are designed in compliance with international cybersecurity and data protection standards, ensuring integration with third-party systems and high scalability.

Visit hanwha.com for more information.

FEATURES

Integration of the CIAS protocol is done through the IB-System IP collection and polling system, which communicates with the external field where sensors are located, and transfers all pre-alarm, alarm, fault, tamper, and non-response states into the Hanwha Vision Video platform.



COMPATIBILITY

CIAS

Ermo 482X3pro
Micro-Ray
Murena Plus
Sioux MemsPro2

Satellite-110
Satellite-81N

HANWHA

Wisenet Wave VMS

HOW DOES INTEGRATION WORK?

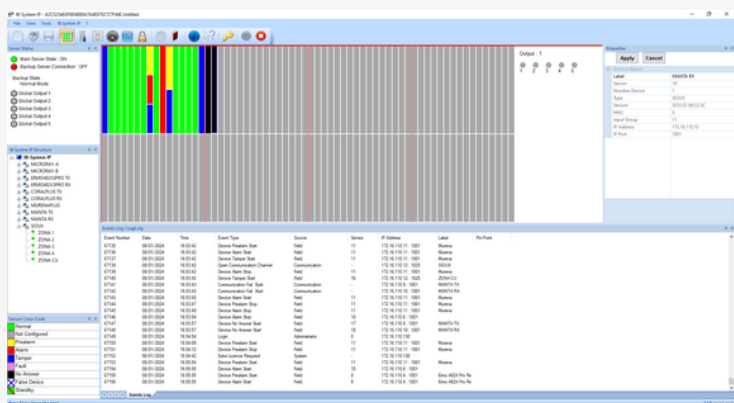
When an intrusion attempt is detected by CIAS sensors deployed on the perimeter, a response and interaction alert is immediately activated. Specifically, IB-System IP will collect all information from the field, process the message and communicate it to the Hanwha platform located in the control center.

The received signal, based on presets or previously programmed intervention logic, will direct one or more cameras to the event to confirm the presence of the intruder and trigger a video recording. This integration enables rapid interpretation and classification of the alarm event and to achieve effective site protection - even in the most adverse weather conditions.

WHAT IS IB-SYSTEM IP?

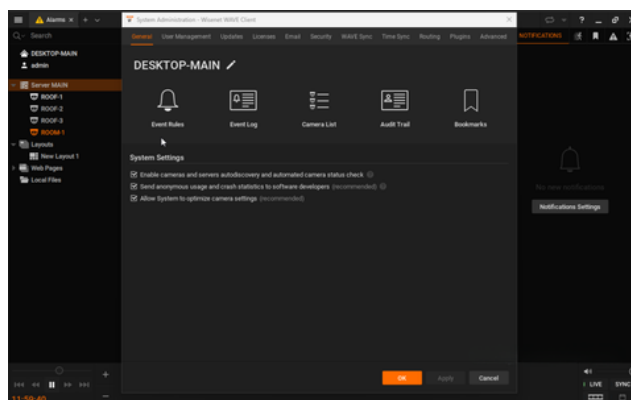
IB-System IP is CIAS's software system for capturing a full range of alarm states. Collection is via Ethernet connection over TCP/IP protocol or via RS485 network and CIAS IP converter. The system can handle up to 1280 sensors with a latency time never over 500mSec. The application handles a number of Cyber Security layers essential in perimeter protection of critical infrastructure systems such as: AES128 encrypted communication, MAC Signature and IEEE 802.1X Security.

IB-System IP allows connection to Hanwha's Vision Video Management Systems, through the "Hanwha-PLUGIN" specially designed by CIAS. This protocol can manage all sensors in the system from a single output.



INTEGRATION REQUIREMENTS

- License Requirements: "PLUGIN-Hanwha"
- Supported Hanwha Versions and Editions: Hanwha Video 7.14.16.12
- Any Other Required Hardware/Devices: CIAS sensors (Ermo 482X3pro, Micro-Ray, Murena Plus, Sioux MemsPro2)
- Minimum System Requirements: Install IB-System IP over a physical server not over a virtual machine
- Operating System version: Windows XP SP3; Windows 7 SP1; Windows 8, 10, 11; Windows Server 2012; 2016; 2019; 2022
- Processor: Processor 2.4 GHz; 2 GB RAM
- Network Interface: NET.FRAMEWORK 3.5; 1x 10/100/1000 Mbps network card
- Available Hard Disk: 2500 MB free space on hard disk



CONFIGURATION

In IB-SYSTEM IP the plug-in is automatically activated through the license in the hardware key provided (upon purchase of the specific Hanwha-PLUGIN license).

If the plug-in is present, IB-SYSTEM IP shows the HANWHA "Wisenet Wave VMS" label in the Output Configuration panel. Once all fields are set up for all the Events you can then proceed to configure the alarms in Hanwha Control Center.



HOT BACK-UP OF SYSTEM

In the unlikely event of the main server going down, a backup server ensures the continuity of alarm management.